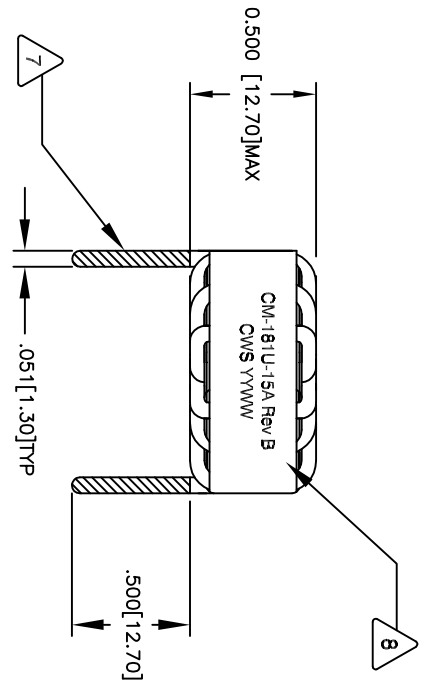


The information contained in this drawing is the sole property of **CWS Coil Winding Specialist**. Any reproduction in part or whole without written permission of **CWS Coil Winding Specialist** is prohibited.

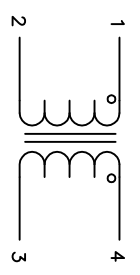
CUSTOMER: _____ REFERENCE PN: _____

APPROVED BY: _____ DATE: _____

REVISION HISTORY			
REV	ECN	DESCRIPTION	DATE
A		PRODUCTION RELEASE	5/17/04
B		MAKE CORRECTION TO DIMENSIONAL	4/10/10

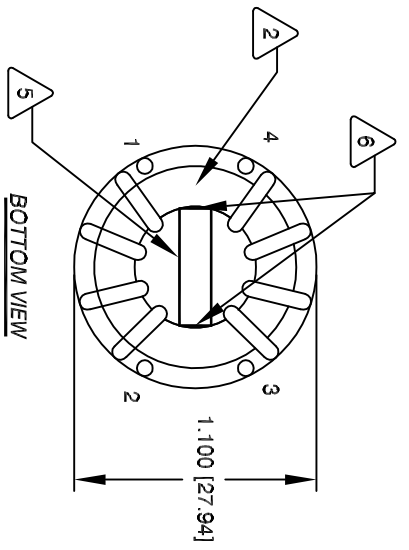


FRONT VIEW

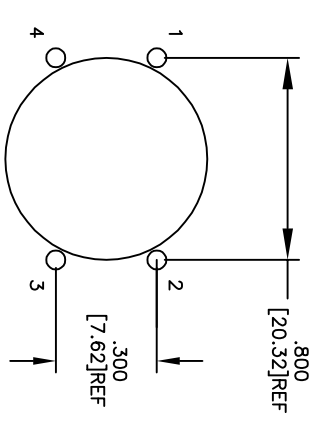


SCHEMATIC

- 9 BUILD TO ROHS COMPLIANCE
- WHERE SHOWN, USING A PERMANENT MARKING METHOD
- MARK PART NUMBER AND REVISION
- WRAP INDUCTOR WITH GLASS TAPE (3M #79 OR EQUAL)
- 8
- TO THE CORE
- MUST REST FLAT ON PCB. LEADS MUST BE TANGENT
- FLUSH WITH THE CORE EDGE, AS SHOWN (I.E. COIL
- REMOVE INSULATION AND TIN LEADS APPROX. 0.5 INCH
- 7
- 6 APPLY EPOXY WHERE SHOWN
- 5 SPACER : TS3.00x9.00x11.70-FR-4 OR EQUAL
- 4 WIND BOTH COILS EVENLY SPACED
- CONSTRUCTION:
- WEIGHT: 16 GRAM
- 1250 Vrms ISOLATION BETWEEN WINDING
- INTER-WINDING CAPACITANCE = 40 pF TYPICAL
- LEAKAGE INDUCTANCE = 2.50 uH TYPICAL
- CURRENT RATING = 15.0 AMPS
- DCR ON EACH WINDING = 3.5 MILLI-OHMS MAX
- L = 150 uH MINIMUM, 10 KHZ, 250 mV
- 3 SPECIFICATIONS:
- 2
- 1 WIRE: UL RECOGNIZED 155 °C OR ABOVE RATED MAGNET WIRE
- CWS BYTE-MARK OR OTHER APPROVED PART
- CORE: COATED FERRITE TOROID, HIGH PERM MNZN
- 1



BOTTOM VIEW



MOUNTING HOLES PATTERN

NOTES: UNLESS OTHERWISE SPECIFIED READ FROM BOTTOM UP.

UNLESS OTHERWISE SPECIFIED	
DIMENSIONING AND TOLERANCE PER ANSI Y14.5M	
ALL DIMENSIONS ARE IN INCHES AND [MILLIMETERS]	
TOLERANCE INCHES: .XXX=±.005 .XX=±.015 .X=±0.30°	
TOLERANCE METRICS: .XXX=±.127 .XX=±.38 .X=±0.30°	
ANGLE PROJECTION	
DO NOT SCALE DRAWING	

CODE	IDENT	MFG. P/N	DESCRIPTION	ITEM NO.
AUTOCAD		X		
SOLIDWORKS				
SIGN		DATE		
DRWN	RPR	5/17/04		
CHKD	JLAU	5/17/04		
ENGR	KSUM	5/17/04		
APPR	JLAU	5/17/04		

PARTS LIST	
COLUMS COM, INC	CWS Coil Winding Specialist.
WWW.COLWS.COM	353 W Grove Ave
	Orange, CA 92865
TITLE:	
Common Mode Line Filter	
SIZE	DWG. NO.
B	CM-181U-15A
SCALE	SHEET 1 OF 1
2=1	

Date: 4/13/2011

Impedance Chart

P/N: CM-181U-15A REV.B

COIL WINDING SPECIALIST, Inc.
353 W. Grove Avenue, Orange, CA
92865
Tel: 714-279-9010
Fax: 714-279-9482
Email: Sale@coilws.com

